

nChronos

Back-in-time Network Analysis Server

Getting Started Guide



Copyright © 2012 Colasoft. All rights reserved. Information in this document is subject to change without notice. No part of this document may be reproduced or transmitted in any form, or by any means, electronic or mechanical, including photocopying, for any purpose, without the express written permission of Colasoft.

Colasoft reserves the right to make changes in the product design without reservation and without notification to its users.

Contact Us

Telephone

Monday - Friday 09:00 - 17:00

- 888-467-2634 (USA only, Pacific Standard Time, except holidays)
- 0086 - 2885 - 320 - 502 (GMT +08:00)

FAX

0086 - 28 - 8512-0911

Sales

sales@colasoft.com

Technical Support

support@colasoft.com

Website

<http://www.colasoft.com/>

Knowledge Base

<http://kb.colasoft.com>

Contents

Colasoft nChronos Server	1
System Requirements	1
Server Environment Setup	1
Installation	2
Server Initialization	2
Start a Link Monitoring.....	4
Colasoft nChronos Console	5
System Requirements	5
Installation	5
Add a Server Connection	6
Activate Server	6
Connect and Open a Link.....	8

Colasoft nChronos Server

System Requirements

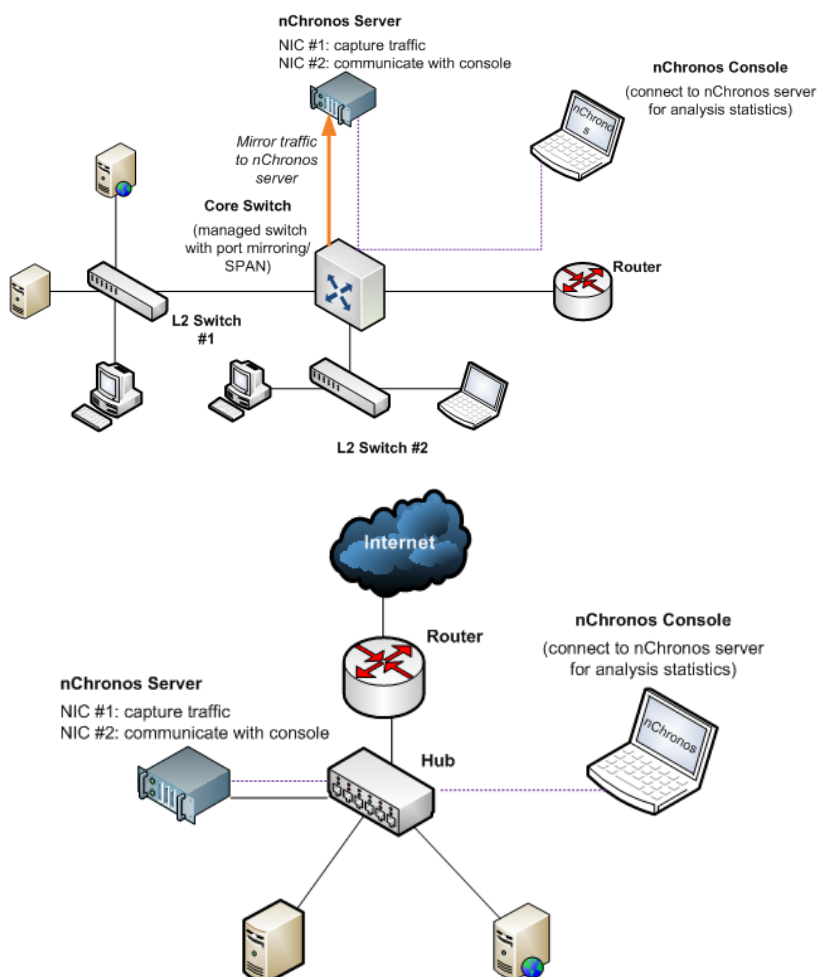
Colasoft nChronos server is designed to work under heavy network traffic environment so it requires high performance server machine to be installed, and for long-term traffic storage, a mass storage hard driver (or RAID) is suggested. The following are the minimum requirements to install and run the server program normally. It is suggested that your system has a higher configuration, especially if you use it to analyze traffic from several heavy traffic links.

Different editions have different hardware requirements, for details about minimum and recommended requirements please visit:

<http://www.colasoft.com/nchronos/editions.php>.

Server Environment Setup

After you install nChronos server program on a server, next you should connect the server to the correct devices to capture traffic. The *correct* devices are the network devices that have all traffic you want to monitor and they are able to send copies of the traffic to your server's NIC. nChronos server will automatically set the server's NICs into promiscuous mode so that all traffic gets to the server will be captured. Generally the correct devices include, **managed switches**, **hubs** and **TAPs**.

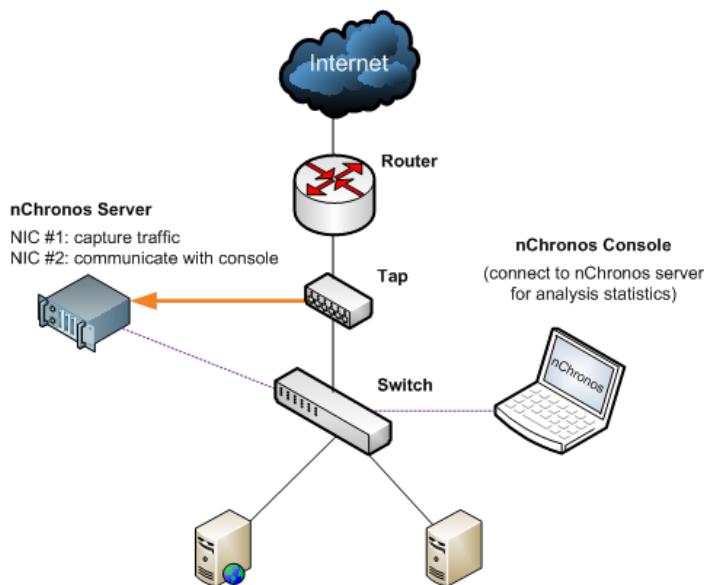


Managed Switch

A managed switch is the perfect choice that you can utilize to copy the packets, and send it to a certain monitor port, so that you can use the nChronos server program to capture the packets. This function is named **Port Mirroring** (Cisco calls it **SPAN**). For more details about port mirroring, please visit [Switch Management](#) on our website.

Hub

If there is not a managed switch in your network, you may use a hub or Tap to get your network traffic. Note that a general hub can only process 100 Mbps of traffic, and it's not a good choice for a modern network. But if the network traffic is small, a hub is also an economic choice.



Tap

Besides using a hub to capture traffic from a small network, a tap is also a wise choice to capture traffic from a busy network. A tap is like a managed switch, which is able to make a copy of each packet and send it to your server. For example, you can put a Tap between a switch and a router, and you can get all the traffic, inbound and outbound, and between them. But all traffic behind the switch will not be captured because they cannot go outside of the switch.


Installation

When you connect the server on which you are going to install nChronos server program, follow the steps below to install nChronos server on the system:

1. Double-click the installation file, **Welcome** screen appears, telling you that Colasoft nChronos server will be installed on your machine. Click **Next** to continue or **Cancel** to exit setup.
2. Read the License Agreement carefully in the next screen to learn our terms and conditions concerning possession and use of the product. You must accept the terms of the license agreement to continue the installation.
3. The screen presents the important information from the **ReadMe** file.
4. **Select Destination Location** screen. It suggests the default location to install the program. You may click **Browse...** to choose another installation location. Note the space requirement display on the bottom of the dialog box. Make sure you have enough space for the installation. Click **Next** to continue.
5. **Select Start Menu Folder** screen. Click the **Browse...** button to designate an alternate start menu folder. Click **Next** to continue.
6. **Select Additional Tasks** screen. **Create a Desktop Icon** and **Create a Quick Icon** are checked by default. Uncheck any checkbox if you do not want to create the icon. Click **Next** to continue.
7. Now you are **Ready to Install** the console on your machine. Click **Install** to start installation or click **Back** to change your settings.

Server Initialization

Double-click **Colasoft nChronos Server** icon on the desktop to open a web browser.



Colasoft nChronos

Step 1: Create Administrator Account

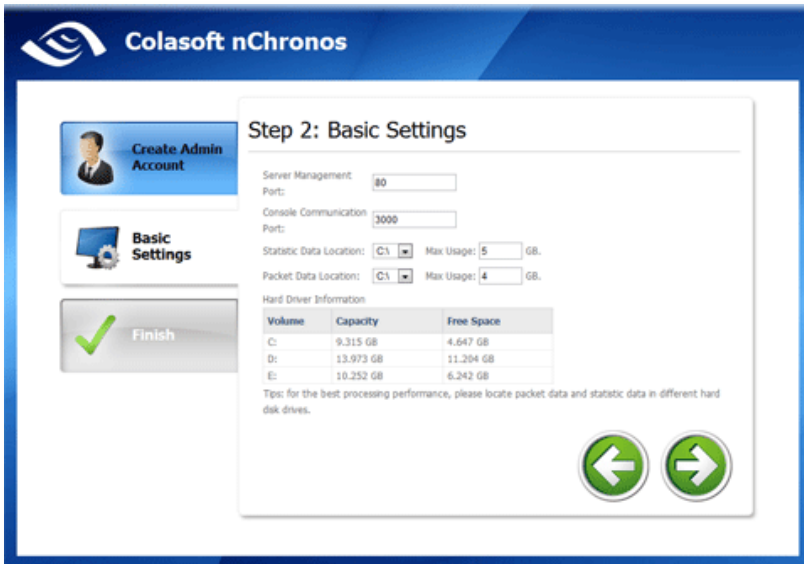
User Name:
 Password:
 Confirm Password:
 Notes:

Create Admin Account
 Basic Settings
 Finish

→

- 1 Create Administrator Account, setup an administrator account for the server

In case you lose your password and someone else uses your password to make changes on your server, please make sure you keep your password in a safe place.



Colasoft nChronos

Step 2: Basic Settings

Server Management Port:
 Console Communication Port:
 Statistic Data Location: Max Usage: GB.
 Packet Data Location: Max Usage: GB.

Hard Drive Information

Volume	Capacity	Free Space
C:	9,315 GB	4,647 GB
D:	13,973 GB	11,294 GB
E:	10,252 GB	6,242 GB

Tip: for the best processing performance, please locate packet data and statistic data in different hard disk drives.

Create Admin Account
 Basic Settings
 Finish

← →

- 2 Set the **port numbers**, one for server listening another for console connection. If no special requirements, you'd better to keep these port numbers by default.

- 3 Specify two disk volumes for packet data and statistics data storage.



Colasoft nChronos

Step 3: Finish

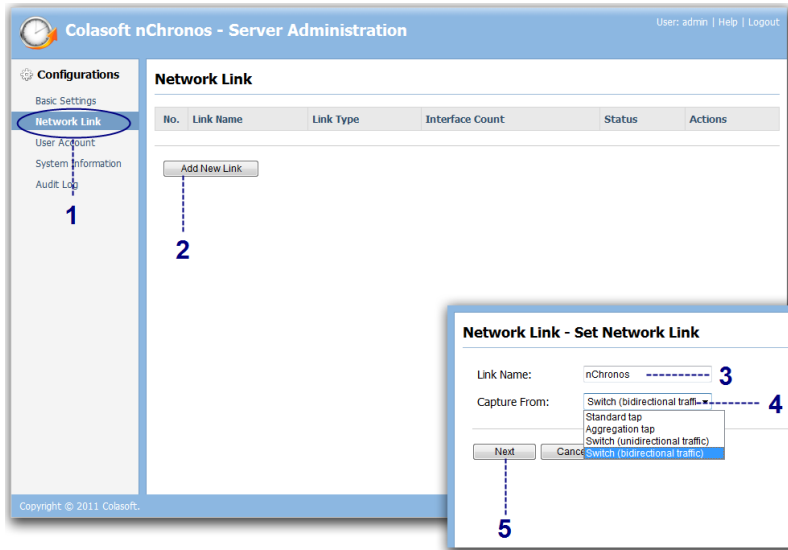
Admin Information
User name: admin
Comment:

Server Settings
Server port: 80
Console port: 3000
Statistic data location: E:\, Max usage: 5 GB
Packet data location: D:\, Max usage: 10 GB

Create Admin Account
 Basic Settings
 Finish

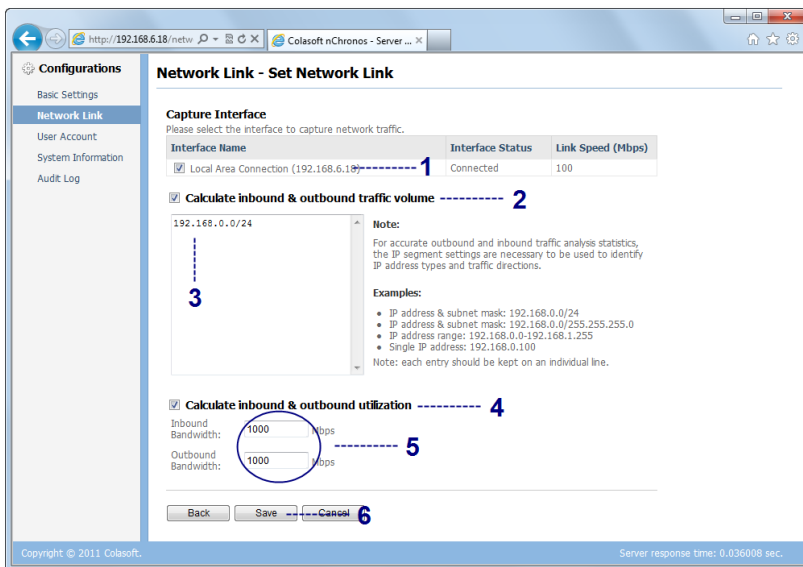
← Done

- 4 Check your settings and click **Done** to finish settings. Then the server will automatically restart.

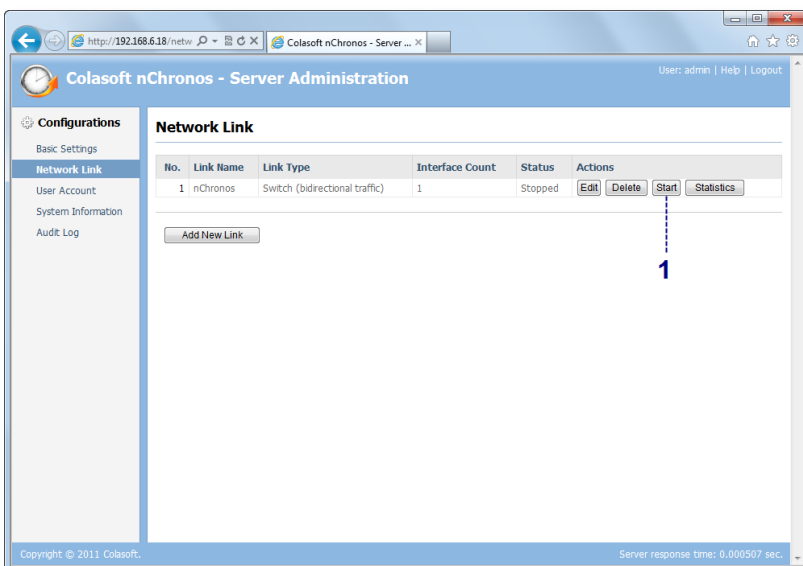


Start a Link Monitoring

- 1 Click **Network Link** on the left panel
- 2 Click **Add New Link** button
- 3 Enter link name
- 4 Select the type of the traffic source device
- 5 Click **Next**



- 1 Select the adapters to capture traffic
- 2 Check **Calculate inbound & outbound traffic volume** option
- 3 Enter the IP segment value to identify your Intranet IP addresses
- 4 Check **Calculate inbound & outbound utilization**
- 5 Enter **Inbound Bandwidth** and **Outbound Bandwidth**
- 6 Click **Save** to finish settings



- 1 Click **Start** button to start the link monitoring session

Colasoft nChronos Console

System Requirements

Colasoft nChronos console does not need a high performance machine and can be installed on many Windows operation systems, such as Windows XP, Windows 2003, Windows Vista and x64 Edition and the latest Windows 7. The following are the minimum requirements to install and run the console normally. It is suggested that your system has a higher configuration, especially if you need to use the built-in Colasoft nChronos Analyzer to perform local in-depth traffic analysis.

Minimum Requirements

- P4 2.8GHz CPU
- 2 GB RAM
- Internet Explorer 6.0

Recommended Hardware

- Intel Core Duo 2.4GHz CPU
- 4 GB RAM or more
- Internet Explorer 7.0 or higher

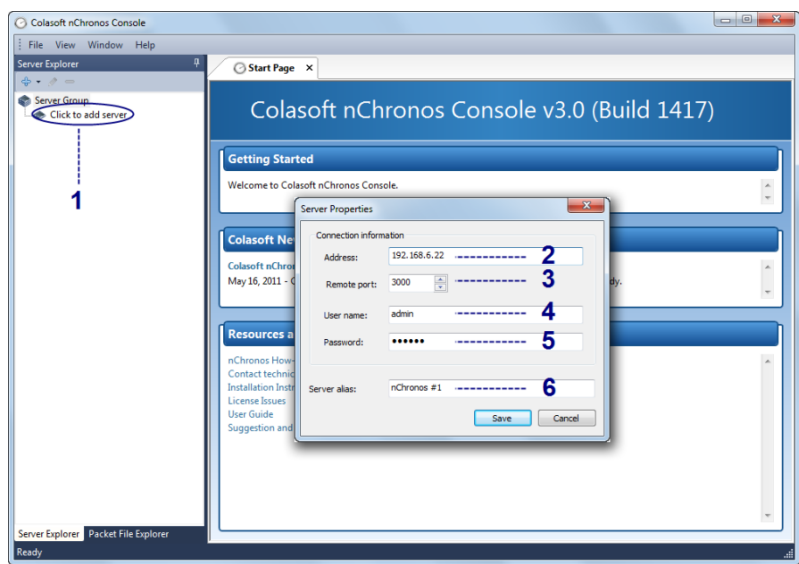
Supported Windows Operating Systems

- Windows XP (SP 1 or later) and 64bit Edition
- Windows Server 2003 and 64bit Edition
- Windows Vista and 64bit Edition
- Windows Server 2008 and 64bit Edition
- Windows 7 and 64bit Edition

Installation

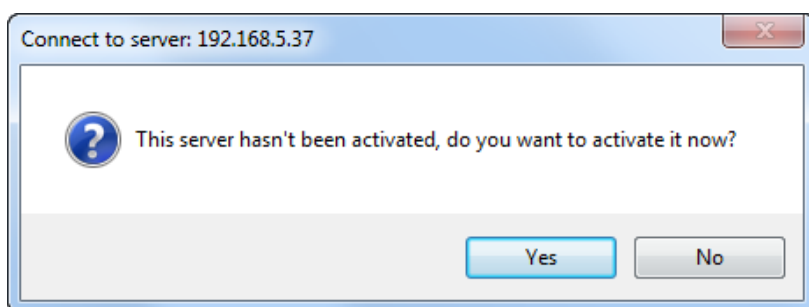
1. Double-click the installation file, **Welcome** screen appears, telling you that Colasoft nChronos console will be installed on your machine. Click **Next** to continue or **Cancel** to exit setup.
2. Read the License Agreement carefully in the next screen to learn our terms and conditions concerning possession and use of the product. You must accept the terms of the license agreement to continue the installation.
3. The screen presents the important information from the **ReadMe** file.
4. **Select Destination Location** screen. It suggests the default location to install the program. You may click **Browse...** to choose another installation location. Note the space requirement display on the bottom of the dialog box. Make sure you have enough space for the installation. Click **Next** to continue.
5. **Select Start Menu Folder** screen. Click the **Browse...** button to designate an alternate start menu folder. Click **Next** to continue.
6. **Select Additional Tasks** screen. **Create a Desktop Icon** and **Create a Quick Icon** are checked by default. Uncheck any checkbox if you do not want to create the icon. Click **Next** to continue.

7. Now you are **Ready to Install** the console on your machine. Click **Install** to start installation or click **Back** to change your settings.
8. When installation is complete, the **completing** screen appears. Click **Finish** to close the setup wizard. The console will be started if you checked **Launch Program**.



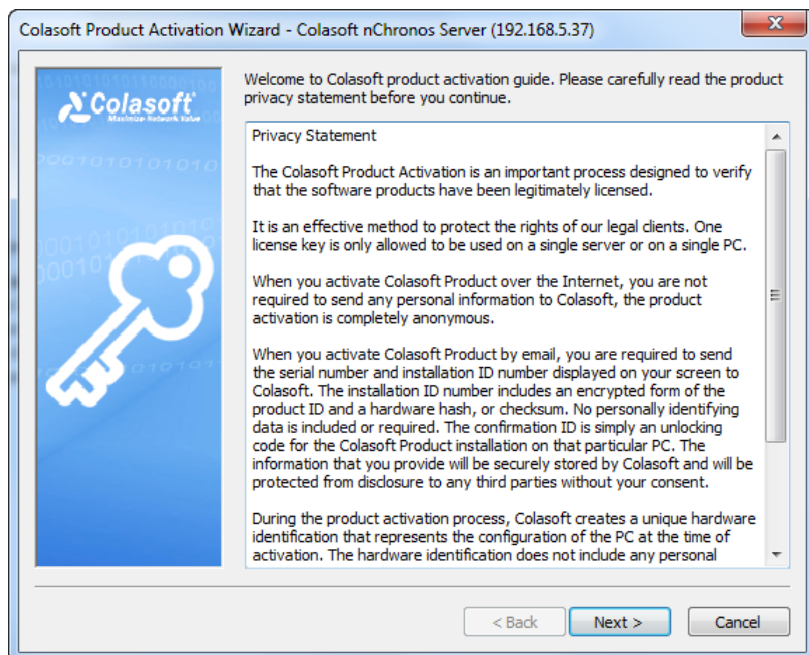
Add a Server Connection

- 1 Click **Click to add server** link on the Server Explorer
- 2 Enter server IP address
- 3 Enter port number
- 4 Enter account name
- 5 Enter account password
- 6 Enter a name for this server (can be ignored)

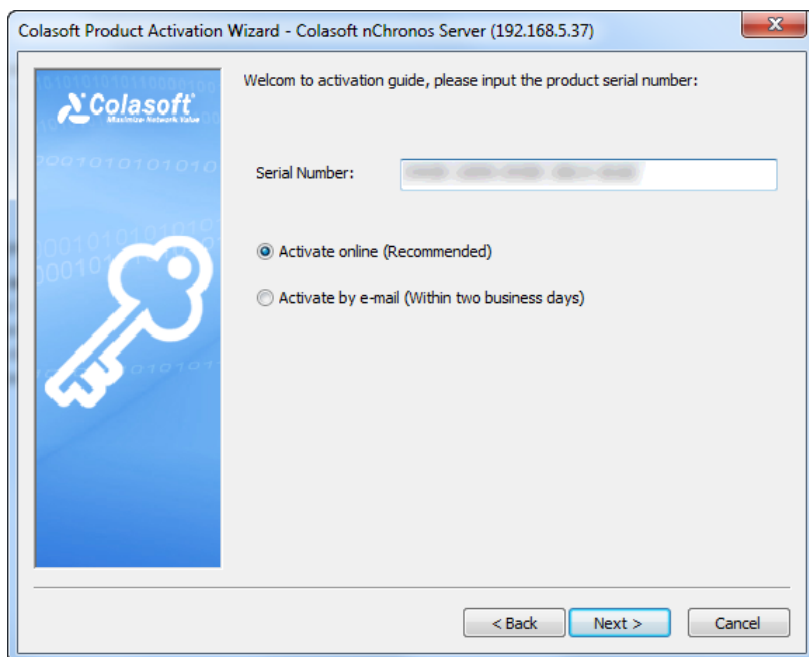


Activate Server

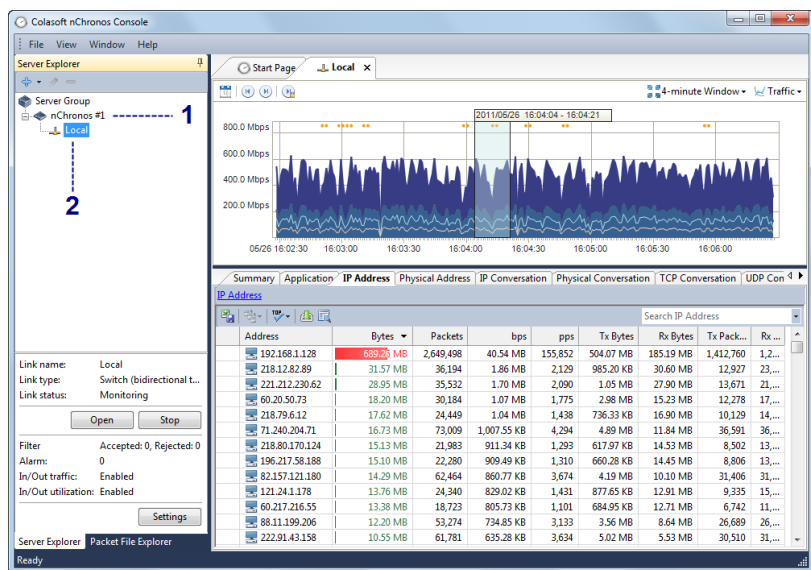
- 1 Double-click on the new connection and the activation window will pop out. Click **Yes** to continue.



2 Read the *Privacy Statement* and click **Next**.



3 Enter your serial number and click **Next** and wait till activation finishes



Connect and Open a Link

1 Double-click the server name, or right-click and choose **Connect** from the context menu on the Server Explorer

2 Double-click the link name to open the window to view network data analysis screen